

The Stained Glass Museum

Opening Times

Easter - October		November - Easter	
Monday-Friday	10:30-5:00	Monday-Friday	10:30-5:00
Saturday	10:30-5:30	Saturday	10:30-5:00
Sunday	12 noon-6:00	Sunday	12 noon-4:30

Last admissions half an hour before closing

Admission Charges

Adults	£3.50
Concessions	£2.50
Family Group (Up to 4 must inc 1 child under 16)	£7.00
Groups (10+)	
Adults	£2.50
Concessions	£2.00

The Stained Glass Museum
The South Triforium
Ely Cathedral
Ely
Cambridgeshire
CB7 4DL
Tel: 01353 660347
Tel/Fax: 01353 665025

Email: info@stainedglassmuseum.com Website: www.stainedglassmuseum.com



This facsimile page from the 14th Century Metz Pontifical illuminated by Penny Price will be on display at our medieval weekend in May

The Stained Glass Museum Friends Newsletter



Spring 2006

Dear Friends,

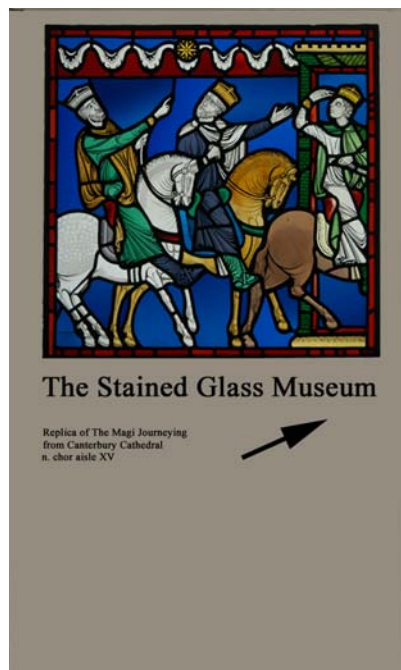
It has been a long and cold winter in the Cathedral and thermal garments and thick boots have been the order of the day. However we have kept warm and busy by planning a programme of events that we think will amuse, stimulate and entertain you! We also have quite a lot to tell you about recent activities.

Our new Museum sign (*right*) was in position in December and we hope the Wise Men will tempt more visitors up the stairs!

Our shop will shortly be making its first tentative appearance on the web-site so look out for some beautiful silk scarves designed and painted exclusively for the Stained Glass Museum by local artist Liz Brandon.

We are delighted that Mrs Sue Freestone, Head of the King's School in Ely, has become a new Trustee of the Museum and is helping us to forge educational links with the school.

After five years, we are saying goodbye to our very hard-working Treasurer Mike Axford and we are very grateful for all the work he has done for us. Malcolm Mitchell took over in February and we warmly welcome him.



New Staff

It has been an enormous relief to me to have had the support recently of two new members of staff. Sally Austin is our Education Officer for two days a week. Volunteer Anna Larner, joined us in September, for a year prior to her taking up a course in Museum Studies in September. The Museum has been transformed! Thanks to Anna, who has been working hard to get all our documentation in place, the Museum is well on its way to achieving Accreditation status in July 2006. Sally has filled the Museum with busy, happy children, and with volunteers, who seem to enjoy the activities as much as they do! We have also received a commission from a local primary school with whom we are working, to provide a fused glass panel for the school's entrance hall. You may be amused to read Sally and Anna's reports of what they have been doing on pages 7 and 8.

New Graduate Researcher Post

In the last year or two we have been giving consideration to the appointment of a Graduate Researcher and we are trying to find the necessary funding for the post. In December we received the offer of a grant of £7,500 per year for 3 years from the Radcliffe Trust and a further £1,000 from the Manifold Trust. We hope to find further funding towards this in order to have a graduate in post in the near future.

PATRON OF THE MUSEUM

HRH The Prince of Wales

TRUSTEES OF THE MUSEUM

The Viscount Churchill OBE *Chairman*

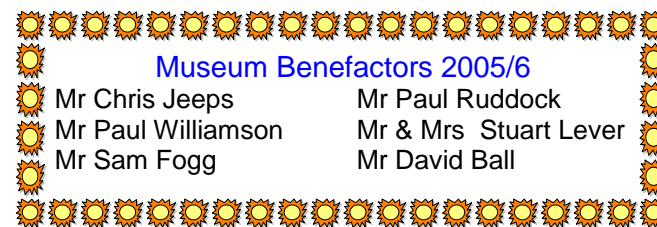
Michael Archer OBE FSA
Sarah Brown FSA
Tom Fenton
Anthony Hopkinson
Juliet Short
Sue Freestone

Dr Tim Ayers FSA
Prof. Brian Clarke
Martin Harrison FSA
Prof. Jean Michel Massing FSA
Dr Paul Williamson FSA

Curator: Susan Mathews

Treasurer: Malcolm Mitchell

Conservation Adviser: Dr Sebastian Strobl FMGP



Thanks also to The Art Fund and the MLA/V&A Purchase Fund, The Radcliffe Trust, The Manifold Trust and The Thomas Parsons Charity who have supported our activities during the year.



I am interested in the following - please send details/tickets:



<p>Stained Glass in London Friday 28 - Sunday 30 April 2006 London Study Weekend Resident £250 Non-resident £150</p>	
<p>Annual Lecture Friday 14 July 6.30 pm - 'Albrecht Dürer and the Apocalypse' Professor Jean Michel Massing, The Society of Antiquaries, Burlington House, London. Tickets £5.50</p>	
<p>Friends Garden Party Saturday 12 August Melbourn Bury, Melbourn, Cambridgeshire £12.50 inc. supper</p>	
<p>Medieval Weekend 27-28 May The Stained Glass Museum Saturday 10.30—4.30 Lecture 6.30 Sunday 12.30—4.00 £5 Individual £9.50 Family ticket</p>	
<p>Autumn Lectures 7.00 pm The Cathedral Centre, Ely 3 October Mrs Mary Kempski: Conservator, Hamilton Kerr Institute, Whittlesford CB2 4NE <i>Restoration of the Thornham Parva retable</i> 17 October Dr Julia Poole, Department of Applied Art, The Fitzwilliam Museum <i>English Delftware</i> 7 November Michael Harrison: Kettle's Yard, Castle Hill, Cambridge CB3 0AQ <i>Jim Eade and Kettle's Yard</i> 28 November Dr Christopher de Hamel: Parker Library, Corpus Christi College, <i>Illuminated Manuscripts</i> Tickets inc. supper and wine £15.00 Lecture only £5.00</p>	

Name:.....

Address.....

I enclose a cheque for £.....Please tick relevant item/s above

Please return this form to us at:
 The Stained Glass Museum, Ely Cathedral, Ely, Cambridgeshire CB7 4DL

Financial Review

The Museum's Annual report for the year to 31 October 2005 shows that the Museum made a small deficit last year of £ 2,597 on its operating expenditure of £82,778. With rising costs, larger deficits have been forecast for the next three years and attention has been drawn in previous Annual Reports to the inadequate level of the Museum's Reserves. The Trustees have therefore decided to seek three year pledges or one-off donations from a number of its friends and connections in order to meet these expected operating deficits. We are glad that an encouraging response has been received.

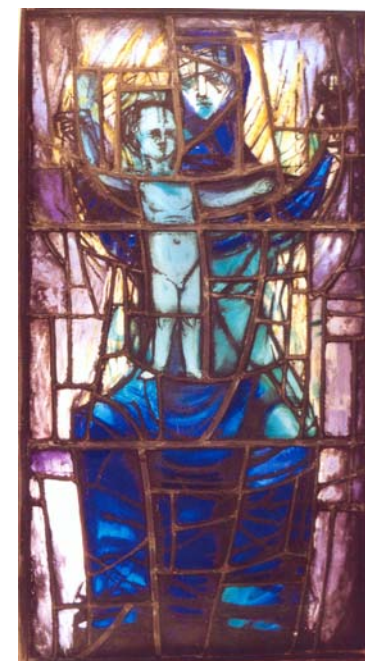
We are most grateful to those who have so generously rallied to meet the Museum's financial needs and we are particularly grateful to Mr. Chris Jeeps who has donated the large sum of £25,000 for the Museum's future work. The names of those pledging £1,000 p.a. for three years or giving an equivalent lump sum will be displayed as Benefactors in the Museum (see inside back cover). If anyone also feels able to contribute to strengthening the Museum's financial position, please contact us. Copies of the Annual Report are available on request.

New Acquisitions

Last Autumn we were delighted when Margaret Traherne presented her panel 'Virgin & Child' (2005/2) to the Museum. Made in 1956, the panel had been displayed for a number of years in Michelham Priory in Sussex. It is a striking and monumental work and the first piece by Traherne to attract national attention. Margaret Traherne was the subject of an article by Sue Pitt, a Friend of the Museum in the BSMGP Journal Vol XX1, 1997.

Autumn lectures 2005

Our Autumn Lecture series was a great success owing partly to sponsorship from a number of local businesses but also thanks to a range of interesting subjects which attracted a band of keen followers. The subjects ranged from unicorns to glass-blowers and from 19th century Ely to 19th century Siena. We are fortunate in being able to fish in a pool of excellent speakers in and around Cambridge and look forward to repeating the event in Autumn this year.



'Virgin & Child' 1956

Annual Lecture 2005

Stained Glass in the British Synagogue: Art & Symbolism

Dr Sharman Kadish's lecture in November was held in the atmospheric and beautiful synagogue in Bevis Marks in London enhanced by spectacular chandeliers and 17th century woodwork. Dr Kadish's scholarly lecture revealed the diversity of synagogue glass and the fact that it is by no means restricted to non-figurative work. It ranged from the light touch of the 18th century to the rich exuberance of David Hillman's 20th century foliated windows.

The second half dedicated to Jewish symbols – the menorah, ram's horn, the Star of David and the tabernacle was captivating.

New Stained Glass Publications

Sarah Brown, a most knowledgeable Trustee, has recently published a new book, 'A History of the stained glass of St George's Chapel Windsor' (see enclosed leaflet). In addition, a new book by Caroline Swash and Dr Judith Neiswander (our Volunteer Librarian last year) is also out. Titled 'Art Glass' from The Intelligent Layman Series' it features contemporary glass in the UK and the US. Both are available from The Museum.

Forthcoming Events

The Stained Glass Museum Spring Study Weekend

Stained Glass in London Friday 28 - Sunday 30 April 2006

There are still a few places available on our Study weekend and full details are available from the Museum and the web-site.

Our programme includes a visit to the stained glass studio of Goddard & Gibbs on Friday afternoon and to Westminster Abbey and St Margaret's Westminster on Saturday morning. On Saturday afternoon we focus on Greenwich visiting the National Maritime Museum to see the restored glass from the Baltic Exchange, the paintings in the Queen's Picture Gallery, and the Trinity Hospital Chapel. On Sunday we will visit the V&A to see the re-displayed Stained Glass & Sacred Silver Exhibition. Accommodation is to be provided at The Royal Foundation of St Katharine. Please contact us if you would like to join us.



*Caption: The Menorah [seven branched candlestick]: an ancient Jewish symbol interpreted in modern stained glass at Coventry Synagogue by Hardman Studios of Birmingham.
Copyright: English Heritage
Photo: James O'Davies*

'Lowndes and Drury: A memoir of the 50s' written by Donald Drury and published in The British Society of Master Glass Painters Journal Vol. XXI, 1997. The article offered insight into Drury's work but tantalisingly did not mention works which may have been related to the Berkeley window installed in the 1960s.

Not deterred the Curator called in the help of colleague Michael Kerney. Michael has particular knowledge about the work of Donald Drury and had taken part in conferences attended by Donald Drury himself. We telephoned Michael and to our excitement he was able not only to tell us about Donald Drury but offered to provide us with Drury's contact address. Drury was alive and living in California! We were thrilled and eagerly reported back to Mr Alna-Benson. I began my return email with the words 'I have good news! We have been able to locate Mr Drury on your behalf!' We hope that Mr Alna-Benson will pick up the trail and complete the quest and when we hear we'll be sure to let you know!

I am very much enjoying my volunteering work. Each day I learn something new to take with me. I couldn't think of a better way to start my career in Museums.

Sally Austin Education Officer

I have been the Education officer for six months now, and it has certainly been an action-packed, exciting and very enjoyable time! It has been a real pleasure to work, not just in such an inspiring museum, but also with such a brilliant team of staff and volunteers whose welcome and continuing support I very much appreciate. I came here from the education department of Peterborough Museum, and before that, I worked as an Explainer at IWM Duxford. My position at Ely is funded by the Heritage Lottery Fund for three years, and covers my work at The Stained Glass Museum, Ely Museum and Prickwillow Drainage Museum, so it's full of variety! My main task is to encourage schools to visit the museums and to design interesting workshops and resources for them.

At the Stained Glass Museum we have been able to use and to build on some really good existing workshops, and have developed some new angles and perspectives, as for example, in a recent Art & Science Day, 'Kaleidoscope' with the King's School, where children made kaleidoscopes to take home. It has also been fruitful to work with the Cathedral in partner visits. Since November just over 550 schoolchildren have visited the Museum from a range of schools, both local and further afield, and including special needs and home-school groups. I'm looking forward very much to the next six months.



As always we look forward to meeting you and hearing from you in the next few months. With very best wishes

Susan Mathew

A Chilly start but a Warm Reception!



My name is Anna Larner and I have been a Volunteer Assistant to the Curator since September and help to support the everyday smooth running of the Museum, along with undertaking a variety of projects. Let me tell you about my three main projects :-

Firstly, I assist with the preparation and planning for the Museum's application for Accreditation with the Museums, Libraries and Archives Council. Achieving Accreditation means that the Museum is meeting good practice standards of museum management. Preparation has included preparing checklists, undertaking reviews, drafting policies and writing manuals.

My second project is to establish the groundwork for the transition of catalogue and index information about the Glass Collection, from paper records to computer based records. We use the specialist museums computer software package 'Modes' which enables us to store information digitally, both in words and images for future use. It also helps us to make accessible information about our collections.

My third project is to continue cataloguing our growing specialist stained glass Library of 2000 books. I have been establishing Library templates and writing Library procedures.

Each week I put on my detective hat and answer enquiries from the public about various stained glass artists and windows and use our Library to search for answers and clues. It is always a thrill to receive thanks from a satisfied enquirer.

We are also fortunate to have an invaluable resource of colleagues with specialist knowledge to call upon should the need arise. One such need arose last September. Let me tell you more.

We received an email from James Alna-Benson, the Moderator at South Berkeley Community Church, California, who explained that he was compiling a history of his church. He wrote 'in 1964 the chancel was re-designed and a stained glass window was installed. Apparently the window was done by Donald Drury. I am wondering if you have any information available about Donald Drury? Any assistance you could provide would be most gratefully appreciated'.

An initial search of our library database revealed an article about Drury entitled

'How did they do That?' Saturday and Sunday the 27th and 28th May

During this weekend we shall be holding a medieval flashback spotlighting the skills of stained glass craftsmen and manuscript illuminators from 1250 - 1350. Full details are in the accompanying leaflet but it is an event that should definitely be in your diary. The magnificent setting of Ely Cathedral, Master Craftsmen in medieval costume, an exhibition of facsimiles available for purchase, a medieval market selling 'Tawdreys' (trinkets related to St Etheldreda, the foundress of the monastery) and a lecture on techniques and materials; It will have everything! We are grateful to East Cambridgeshire District Council and the Local Network Fund for supporting the event.



Copy of 11th century head from the Abbey church, Wissembourg, Alsace, now in the Musée de l'Oeuvre Notre-Dame, Strasbourg The earliest surviving stained-glass image of Christ Painted by stained glass Master Craftman Paul San Casciani.

Annual Lecture London 14 July - 'Albrecht Dürer and the Apocalypse'

Our Annual Lecture this year will be given by Professor Jean Michel Massing, a Trustee of the Stained Glass Museum and fellow of King's College, Cambridge. The lecture will be held at the Society of Antiquaries, Burlington House, London adjacent to the Royal Academy.

[Friends Garden Party - Melbourn, Cambridgeshire, Saturday 12 August](#)

Mr & Mrs Anthony Hopkinson have very generously offered to host our Friends' Summer Garden Party at their home, Melbourn Bury in Melbourn, Cambridgeshire. The house stands in extensive grounds with a small lake which forms the start of the river Mel, a tributary of the Cam.

Historical records show that in the reign of King Athelstan, who died in 839 this land was part of the royal domain. It was given to the monks of Ely by King Edgar in 970 AD, so it has a history of over 1,000 years. In that time there have only been three owners. At the Reformation it was taken from the monks and given to the Diocese of Ely.

In the early 19th Century John Fordham took on the tenancy and his son bought the house from the Dean and Chapter in 1850, so his family became the third owner after the monks and the Diocese. Sylvia Hopkinson, present owner of the house, is his descendant which makes her children the seventh generation of the family to live there.

As last year, we shall be serving refreshments accompanied by musical entertainment and we do hope you can join us.

[SGM Autumn Lecture Series 2006](#)

By popular demand we shall be holding a further series of lectures on alternate Tuesdays in October and November at the Cathedral Centre, Palace Green, Ely. Rowley Fine Arts and Auctioneers have once again, generously offered to sponsor them. Lectures will start at 7.00 pm and will be followed by supper.

3 October Dr Mary Kempksi: Conservator Hamilton Kerr Institute,
Restoration of the Thornham Parva retable

17 October Dr Julia Poole, Department of Applied Art, The Fitzwilliam Museum, Cambridge
English Delftware

7 November Michael Harrison: Kettle's Yard, Castle Hill, Cambridge *Jim Eade and Kettle's Yard*

28 November Dr Christopher de Hamel: Parker Library, Corpus Christi College, Cambridge
Illuminated Manuscripts

[Christmas Exhibition - Ely, 4 November – 31 December](#)

Dialogues London and Iceland - Our Christmas exhibition will showcase a series of glass pictures and drawings inspired by the beauty and poetic toughness of Icelandic artefacts and plants. Caroline Swash, ATD, FMGP, the artist, is Leader of the Post Graduate Courses, 'Glass, Fine Art and Architecture' at Central Saint Martins College of Art and Design, University of *The Arts, London*.



There will be a Private View in the Museum followed by a Lecture in the Cathedral Centre on Friday 3 November.